

REV	LOCATIONS	DESCRIPTION	DATE	REVISER	APPD
1	△	New drawing&Update dimensions	22/JUN/26	MATT	LEO

SPECIFICATIONS

Electrical

Current Rating: 1.5A AC(rms)/DC
Voltage Rating: 30V AC(rms)/DC
Contact Resistance: 30 mΩ Max
Withstanding Voltage: 500V AC r.m.s
Insulation Resistance: 1000 MΩ Min
Temperature Range-Operating: -40°C~+85°C

Material and Plating

Housing: Thermoplastic Polyester(UL 94V-0)
Contact Pin: Phosphor Bronze/Selective gold on contact area, Tin on tail
Shell: Brass/Nickel Plated
Cover: SPCC/Nickel Plated

* Note: All materials meet the "EU RoHS"

Pinassignment:

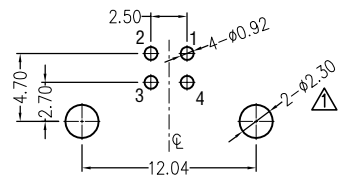
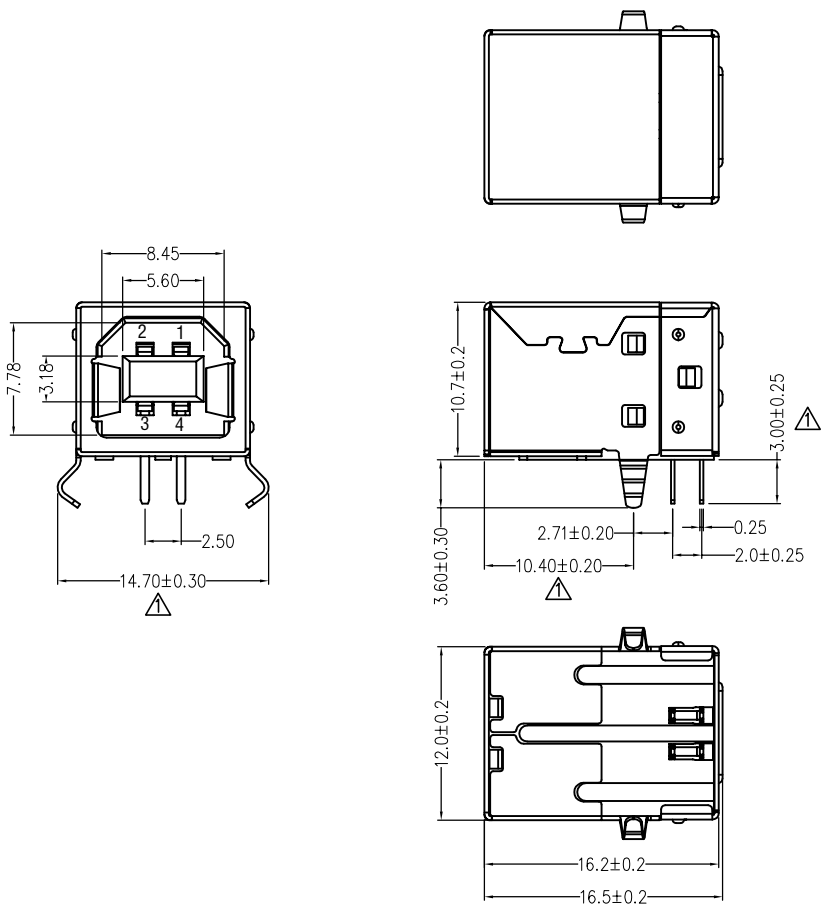
Pins	Signal name
PIN 1	+5V
PIN 2	DATA-
PIN 3	DATA+
PIN 4	Ground

Ordering Informaion

FUS 2 13 - F D B XX K
1 2 3 4 5 6 7 8

1	Category FUS-USB	2	Series Number 2-USB 2.0	3	Distinction No. 13	4	Type F-Female	5	Assembly Layout D-DIP
6	Entry Angle B-90° Angle	7	Color-Resin K6-Black W1-White	8	Packaging K-Tray				

A
B
C
D
E
F



Recommended P.C.Board Layout
General tolerances: ±0.05mm

 THIRD ANGLE PROJECTION	GENERAL TOLERANCES (UNLESS SPECIFIED)		APPROVE BY FRANK	DATE 21/JUN/13	PART NO. FUS213-FDBXXK	ITEM NO. FUS213	 Building Technology Cornerstone	
	X. ±0.30	X.* ±5°	CHECKED BY CHERRY	DATE 21/JUN/13	TITLE USB B-type 4Circuits 90°Angle Female(DIP)			REV 1
DESIGN UNITS METRIC(mm)	X.X ±0.20	X.X* ±2°	DRAWN BY JACOB	DATE 21/JUN/13	THIS DRAWING CONTAINS INFORMATION THAT IS PROPRIETARY TO TXGA INDUSTRIAL ELECTRONICS(S.Z)CO.,LTD AND SHOULD NOT BE USED WITHOUT WRITTEN PERMISSION			
SCALE 5:1	SIZE A4	X.XX ±0.15	X.XX* ±1°					
		X.XXX ±0.10	X.XXX* ±0.5°					

1 2 3 4 5 6 7 8